



PHOTO BY: ELLIOT POND | LBCC SPORTS MURAL

MURAL UNVEILED

Four-month project finally finished

After four months of skilled work from mural artist Rip Cronk the mural outside of the LBCC Activities Center has been completed. To celebrate the finished art work, a dedication party was held outside the AC building last Wednesday, Sept. 28, in honor of Cronk and the students he painted.

The stunning 27 foot mural was based on photographs taken by Brian Hausotter, who photographed LBCC sports teams over the 2015-16 school year.

"Getting to work with athletes and see them come to life was exciting," said Hausotter.

Depicted from left to right, student athletes Samantha Rouleau, Kendrick Abraham, Kyia Duvall and Tyger Liner represent volleyball, basketball and baseball, respectively.

M'liss Runyon is chair of New Art Projects for the Arts & Aesthetics Resource Team (AART) for the LBCC campus, who has been working on beautifying the LBCC college campus for the past three years. For Runyon the mural is a crowning achievement; years of marketing and coordination coming to fruition.

"Seeing it unfold was the most exciting part of the mural," said Runyon.

Cronk has painted murals in the U.S. as well as in Switzerland. He has created close to 50 murals, but this

"Seeing it unfold was the most exciting part of the mural," said Runyon.

is his first mural in Oregon.

The side of the gym was photographed and every brick numbered to work as a reference so that the mural would be the right dimensions. Cronk uses his extensive experience as a portrait painter for the murals.

Transitioning from the portraits of the students to painting them on the wall of the gym had its difficulties. "All were challenging for different reasons," said Cronk.

Despite any difficulties faced in the long process, the brick walls of LBCC have been graced with a mural that will stand the test of time.



STORY AND PHOTO BY
ELLIOT POND
@MARSHALSPHOTOS

THEATER CONSTRUCTION INTERFERES WITH PLAY

The Russell-Tripp Performance Center construction flips the script on the play

Building updates have turned into a major inconvenience for the theater students of LBCC.

The Russell-Tripp Performance Center is currently getting new earthquake safety updates installed throughout the theater. Construction was supposed to be finished during the summer, leaving enough time for theater students to practice and put on the annual fall play.

However, the finish date has been pushed forward, leaving theater students and Black Curtain Society members alike out in the cold.

"We've had to re-think a couple of things. Originally we were to produce a play written by one of our students, Jakob Holding, entitled 'The Hasbeens.' Unfortunately, this has been cancelled because there is no theater," said Dan Stone,

the theater director at LBCC. "They are now left with producing a show in a found space...They now will be producing what's called a harlequinade. This will also be accompanied by a short Commedia dell'Arte play."

A harlequinade is a type of slapstick play that focuses on clowns, harlequins and stage effects with a love story tucked snug in the middle. A Commedia dell'Arte literally means "comedy of craft," and is a type of improvisational play.

Story finished on Page 2



The Dam

New family-friendly sports bar and arcade opens in Corvallis.

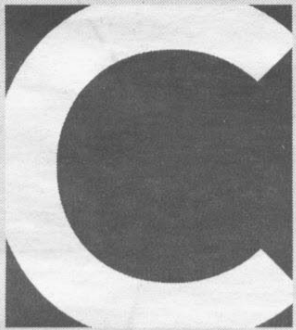
Story on Page 4



Basketball

"Nowhere to go but up," said Everett Hartman, Linn-Benton Community College's Interim Men's basketball coach.

Story on Page 8

THE LINN-BENTON
COMMUNITY COLLEGE

COMMUTER

The Commuter is the weekly student-run newspaper for LBCC, financed by student fees and advertising. Opinions expressed in The Commuter do not necessarily reflect those of the LBCC administration, faculty and students of LBCC. Editorials, columns, letters, and cartoons reflect the opinions of the authors.

Letters Welcome

The Commuter encourages readers to use its "Opinion" pages to express their views on campus, community, regional and national issues. The Commuter attempts to print all submissions received, but reserves the right to edit for grammar, length, libel, privacy concerns and taste. Opinions expressed by letter submitters do not represent the views of the Commuter staff or the College. Deliver letters to:

Address:

The Commuter Office
Forum 222
6500 SW Pacific Blvd.
Albany, Oregon 97321

Web Address:

commuter.linnbenton.edu

Phone:

541-917-4451, 4452 or 4449

Email:

commuter@linnbenton.edu

 **Twitter**
@LBCommuter

 **Facebook**
The Commuter

 **Google+**
LBCC Commuter

Our Staff

Adviser
Rob Priewe

Editor-in-Chief
Emily Goodykoontz

Chief Design Officer
Nick Lawrence

Contributing Layout Designer
Joy Gipson

Managin Editor/A&E
Alyssa Campbell

A&E Contributors
Truman Templeton
Steven Pryor

News Editor
Hannah Buffington

Photography
Elliot Pond

Copy Editor
Katelyn Boring

Sports Contributors
Brian Hausotter
Nick Fields

Web Master
Marci Sisco

Advertising
Austin Mourton

Contriutors
Moriah Hoskins
Danielle Jarkowsky

THEATER CONSTRUCTION INTERFERES WITH PLAY

The Russell-Tripp Performance Center construction leaves students without a theater

Continued from Page 1

"It's a shame the construction has interfered with the 2016-2017 fall term, putting the students organized fall play on a different course. Instead of having a full-length student written, student directed play, we are now hoping to raise money for ACTF by putting on a Commedia dell'Arte show this fall. We are grateful for the safety updates and hope students will become involved in the new project," said Jaime Lee, student director of the fall term play.

Originally, the Black Curtain Society's goal for the fall term play was to raise money for an upcoming trip to the American College Theater Festival in Colorado, but without a theater, they cannot use the play that had been student written and tailored for the fundraising event.

"I'm happy that the school is taking the earthquake that's supposed to hit Oregon seriously. I think it's really important that

everything gets updated so we can be safer," said Maddie Rogers, co-president of the Black Curtain Society. "I wish that we had a little more time to prepare so we could work the theater schedule around construction. I know it'll be a bit of an inconvenience for a while, but the show must go on and we'll find a way to make it through."

There's a reason for the construction stalling, though.

"We had discoveries that slowed progress," said Dave Henderson, LBCC's Financial Officer.

The construction crew discovered that the drawings provided of the internal structure of the Russell-Tripp were inaccurate, and that much more work had to be done than originally planned for. The theater is slated to be complete in the third week of October.

"This shouldn't have an impact on anyone studying theater," said Henderson.

"This shouldn't have an impact on anyone studying theater," said Henderson.



STORY BY
MORIAH HOSKINS
@MORIAH_HOSKINS

CAMPUS VOICE

If you had a super power, what would it be?



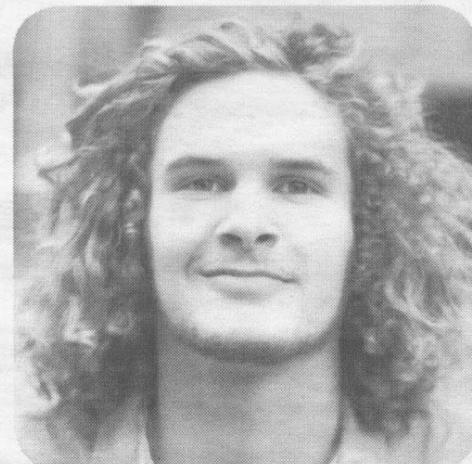
LUIS CHAVEZ: "DON'T RUSH TAKE YOUR TIME, BUT IF YOU HAVE SUPER SPEED YOU CAN GET IT DONE QUICK."



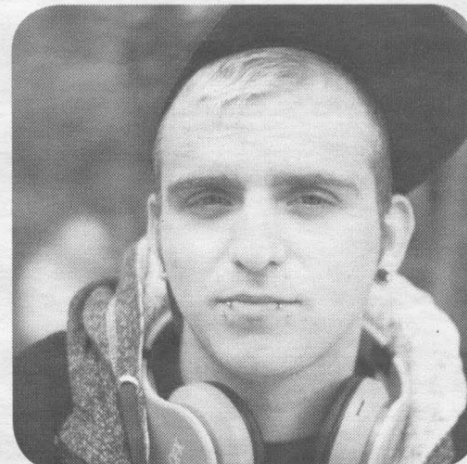
MARIKA LAPPEWEISS: "TELEPORTATION, IT WOULD MAKE TRAVELING VERY EASY."



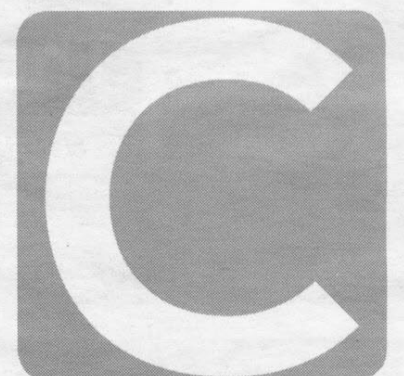
JAMES VERMILYEA: "SUPERSPEED, IT WOULD BE EASY TO GET AROUND AND SAVE PEOPLE IN THE BLINK OF AN A EYE."



BORDIE MERCHANT: "TELEPORTATION."



DAVID BUCK: "TO FLY."



@LBCommuter

STORY AND PHOTOS BY
ELLIOT POND

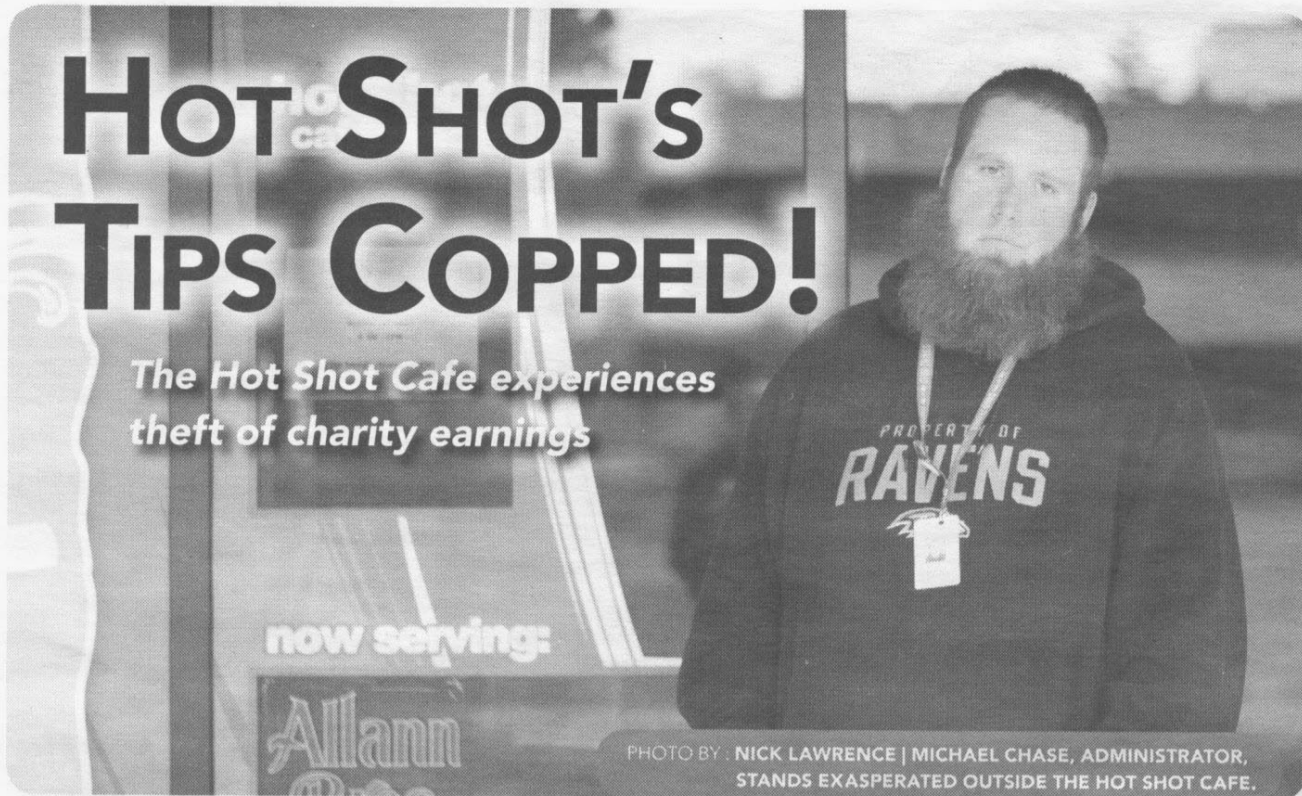


PHOTO BY: NICK LAWRENCE | MICHAEL CHASE, ADMINISTRATOR, STANDS EXASPERATED OUTSIDE THE HOT SHOT CAFE.

HOT SHOT'S TIPS COPPED!

The Hot Shot Cafe experiences theft of charity earnings

On Tuesday, Oct. 4, Linn-Benton Community College's student-run campus coffee shop The Hot Shot Cafe experienced theft. The theft occurred around noon.

"It's very disturbing," said Hot Shot Cafe's supervisor Barb Horn. "Those tips go to fund the LB Lunch Box for students who are hungry."

The Linn-Benton Lunch Box program is an emergency food program for students and staff in need. They provide food items and personal hygiene products available for pick up twice per term.

Hot Shot manager Rebecca Fewless and administrator Michael Chase were present at the time, and had just turned their backs when someone reached into the tip jar.

"It seemed like someone just stuck their hand in it and took what they could. I think we should get a security camera," said Chase.

Unfortunately, due to lack of funding, procuring a security camera for the department may not be feasible.

The LBCC campus security department has declined to comment and the tip thief is still at large.

If you have any information regarding the theft, please contact the LBCC campus security department immediately at (541) 917-4440.

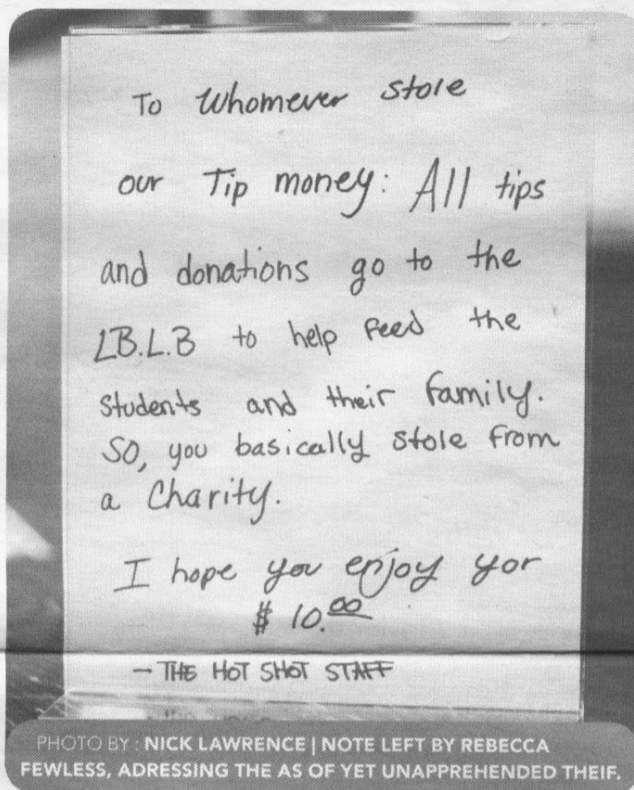


PHOTO BY: NICK LAWRENCE | NOTE LEFT BY REBECCA FEWLESS, ADDRESSING THE AS OF YET UNAPPREHENDED THEIF.

To whomever stole
our Tip money: All tips
and donations go to the
L.B.L.B to help feed the
students and their family.
So, you basically stole from
a Charity.

I hope you enjoy your
\$10.00

- THE HOT SHOT STAFF



STORY BY
ALYSSA CAMPBELL
@ALYSSAFAYEC



CLOWN UPDATE!

According to the Oregonian, an epidemic of clowns have spread across the country and have finally been spotted in Oregon.

The Albany, Ore. Police Dept. released this statement regarding the matter: "Chasing and scaring people while dressed as a clown will likely be construed as a crime, and you will be dealt with accordingly."

THE COMMONS Cafeteria

... MENU ...
10/5-10/11

Wednesday: Kalua Pork with Steamed Rice* and Mac Salad, Grilled Chicken Breast with Romesco and Caper Vinaigrette*, Spinach and Mushroom Crepes. Soups: Mulligatawny, and Potato Cheddar*

Thursday: White Wine and Herb Braised Chicken, Sweet and Sour Tempura Shrimp with Steamed Rice, Grilled Polenta with Ratatouille*. Soups: Lentil Bacon*, and Dilled Potato Chowder.

Monday: Poached Salmon with Roasted Cherry Tomato Vinaigrette*, Meatloaf with Mushroom-Shallot Demi, Vegetable Quiche. Soups: Egg Flower*, and Split Pea*.

Tuesday: BBQ Chicken Sandwich with Coleslaw, Grilled Pork Chop with Mustard-Leek Cream Sauce*, Spanikopita. Soups: Chicken Noodle, and Cream of Onion*

Menu is subject to change without notice.
Items denoted with a * are gluten-free

Monday-Friday 10 a.m.-1:15 p.m.



UPCOMING EVENTS

Oct. 6:

Oktoberfest at Brookdale

* 1560 SE Davidson St., Albany, 5:30 p.m.

Oct. 6:

Oktoberfest at Brookdale

* 1560 S.E. Davidson St., Albany, 5:30 p.m.

Oct. 8:

Oregon Mennonite Festival

* 3700 Knox Butte Road. E., Albany

Second Saturday's Benefit Concert Series –
for a better world

* 116 N.W. 3rd St., Corvallis 6 p.m. to 8 p.m.

Oct. 9: 26th Annual Great Pumpkin Run

* Benton County Fairgrounds, 110 S.W. 53
St., Corvallis, 7 a.m. to 12 p.m.

Oct. 14:

Chocolate Fantasy: annual fundraiser for
the Arts Center's programs

* CH2M HILL Alumni Center, 725 S.W. 26.
St., Corvallis, 7 p.m. to 10 p.m.

Oct. 15:

Beaver's Home Game (Men's Football)

* Oregon State University, 1500 S.W. Jeffer-
son Ave, Corvallis

6th Annual Runaway Pumpkin Half Mara-
thon & 8K

* Cheadle Lake Park, 37919 Weirich Drive,
Lebanon, 9 a.m.

Oct. 20:

Grand Opening Event for the LBCC Innova-
tion & Heavy Transportation Building

*RSVP by October 14, 2016 by calling 541-
917-4209 in Lebanon.

Oct. 21 to 22:

8th Annual Blocktoberfest, \$5, 21+ after 8
p.m. *Jefferson Avenue, between Third and

Fourth Street, Downtown Corvallis

Oct. 23:

Scio Historical Society "Birthday Cake &
Tea" * ZCJB Hall, Scio, 1:30 p.m.



A LABOR OF LOVE

New family-friendly sports bar opens in Corvallis

After more than three years of setbacks, planning, and labor, Corvallis' first "barcade" opened its doors on Sept. 25.

The Dam is a sports-themed arcade and bar. It is located in the former Sivetz Coffee building in downtown Corvallis, Ore.

"The building was condemned," said owner Ben Metzger. "First we had to do a change of occupancy - it used to be a factory - to public occupancy."

This triggered seismic upgrades, a sprinkler system installation, and a major water pipe installation under Fourth St.

Fortunately Metzger is also a general contractor. This helped him save money, as he did much of the work himself.

"I worked construction during the days, this place at night. It was a labor of love," said Metzger.

Walking into The Dam is like walking into a miniature sports arena. A small basketball court complete with megatrons (really TVs) takes up the center of the room. Instead of actual basketball hoops, basketball nets hang from the lights.

A couple of custom cornhole sets are on the court. A clear-coated bar top covered in Metzger's life-long sports trading card collection surround the outside of the court, while paintings of Portland Trailblazer, Seattle Mariner and OSU Beaver athletes cover the walls.

"The game-court is something no one else has," said Metzger. "It's not space dedicated to tables and chairs; it's kinda insane. Here, the focus is on the games."

All of the creative work is Metzger's. He made the bars, painted the artwork, and custom built some of the video games.

"The [decorating] is not even halfway done. I have more Beaver players to [paint]. I did all of the sports art downstairs to keep consistency of style, but upstairs with the arcade art I am dying to have contributions from other artists," he said.

Up the red-carpeted steps to the second floor, the first game you find is one of Metzger's unique creations. It's a sit-down Donkey Kong inside a whiskey barrel - inside a room full of more custom video games and pinball machines. Game of Thrones or Austin Powers, anyone? Yeah baby!

Now at eye level with the megatrons, you can look down on the court. Place your drink on another long trading card-covered counter. Visit the small tended bar tucked into a corner.

"This place offers something different. It's a sports bar within an arcade with a full food menu," said bartender Liz Arjavac.

"The bar is all ages until 8 p.m. I can't think of another bar in town you'd want to take your kids to," said Arjavac.

The main bar has 12 revolving taps of popular Oregon beers, a small selection of canned beer, local wines, ciders, spirits, soda, and milk.

The menu has a variety of comfort foods, like nachos and BBQ chicken grilled cheese. It will

also have milkshakes - regular and alcoholic versions - but cereal is the most unique item. Seriously: Captain Crunch, Lucky Charms, and Cheerios boxes sit on the shelf behind the bar.

Over time, the menu and space will change.

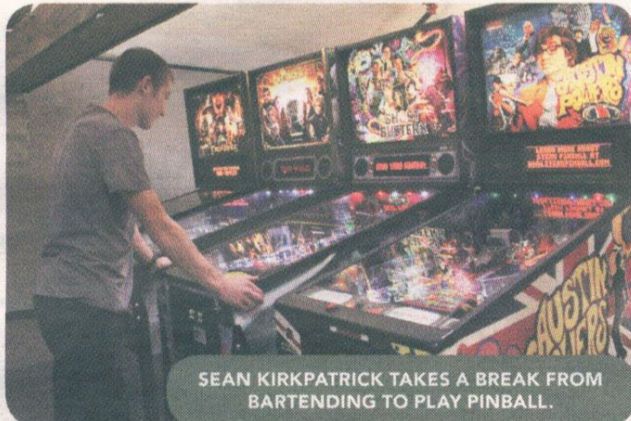
"Right now we want to get people in, and we will make incremental improvements as we go," said bartender Sean Kirkpatrick.

They have big plans for the future, like concerts and video game competitions.

"The court is a versatile space. We will hold a free corn hole league, and coming up on October 7 we have our first concert," said Kirkpatrick.

Metzger and Kirkpatrick are designing unique games for the court, such as what they are calling putt-skee, a combination of putt-putt and skeeball, where you use a golf club to hit a ball up a ramp into holes that will light up when you score.

"It could be a great spot for live shows. It's perfect for music," said Landon Mattson, a first-time customer and OSU graduate.



SEAN KIRKPATRICK TAKES A BREAK FROM BARTENDING TO PLAY PINBALL.

“The game court is something no one else has. It is not space dedicated to tables and chairs. It’s kinda insane.”

At-a-Glance:

- 349 S.W. 4th Street, Corvallis, Ore. 97330
- 541-368-5170
- Hours: 11 a.m. - midnight
- Facebook: [thedamsportsarcade](#)
- Prices: Food \$2 - \$8, Milkshakes \$6 - \$10
- Beers currently on tap: Double Mountain, Laurelwood, Wild Ride Brew, Boneyard, Calapooia
- Friday, Oct. 7 at 8:30 p.m. Vursatyl

STORY AND PHOTOS BY DANIELLE JARKOWSKY



PHOTO BY: BRIAN HAUSOTTER | RIP CRONK
PAINTS THE FACE OF DUVAL.

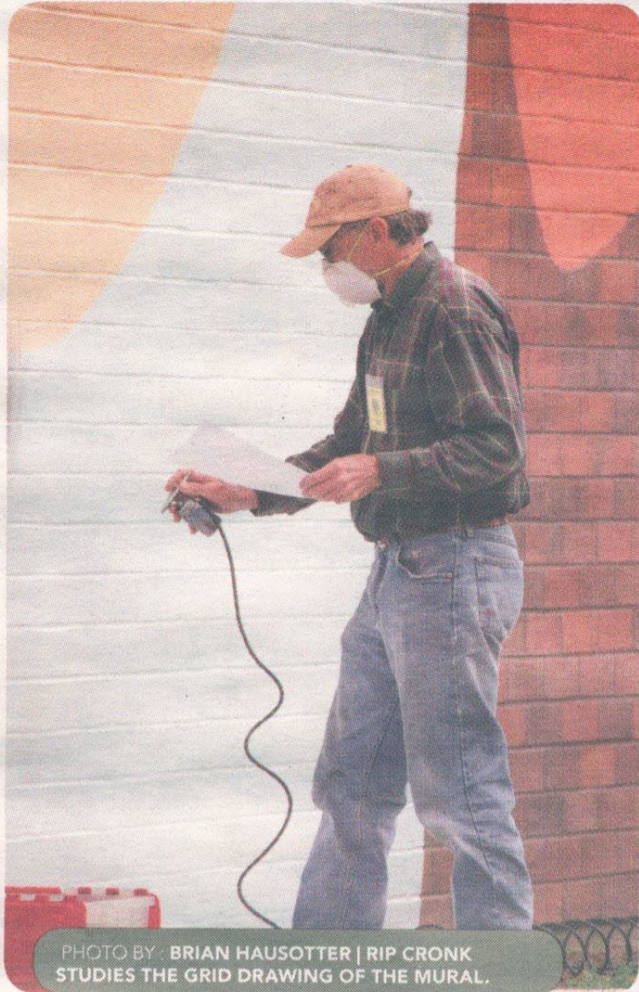


PHOTO BY: BRIAN HAUSOTTER | RIP CRONK
STUDIES THE GRID DRAWING OF THE MURAL.



PHOTO BY: BRIAN HAUSOTTER | RIP CRONK
PAINTS THE TWO ON DUVAL'S JERSEY.



PHOTO BY: ELLIOT POND | RIP CRONK FINISHES KENDRICKS HAND.



PHOTO BY: CARLIE SAMATIS | ATHLETE SAMANTHA ROULEAU
STANDS IN FRONT OF HER LIKENESS AT THE MURAL DEDICATION.

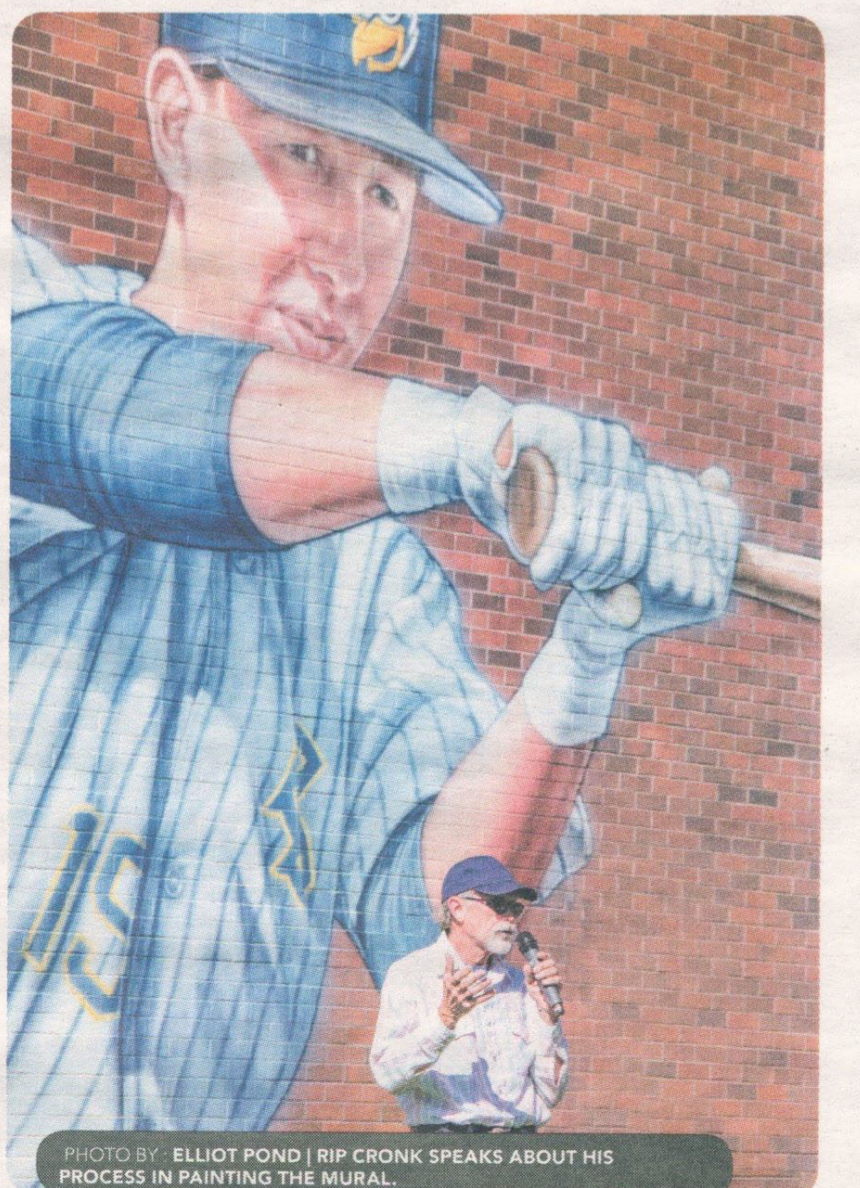
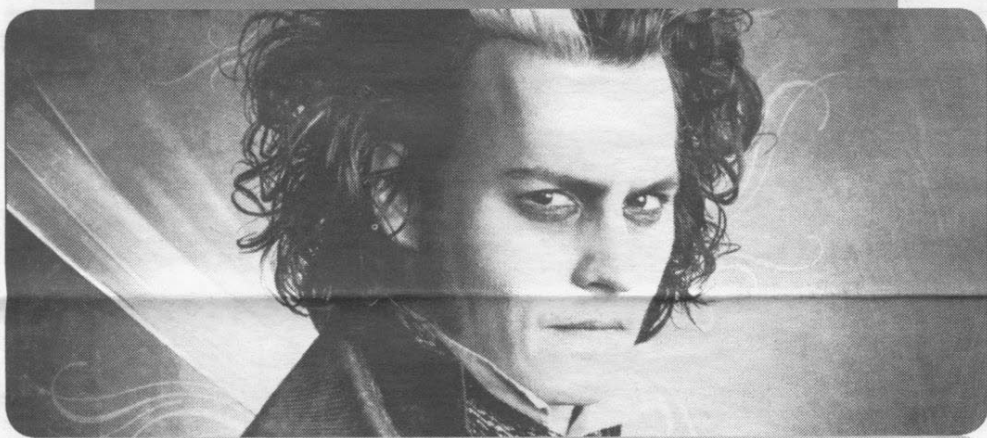


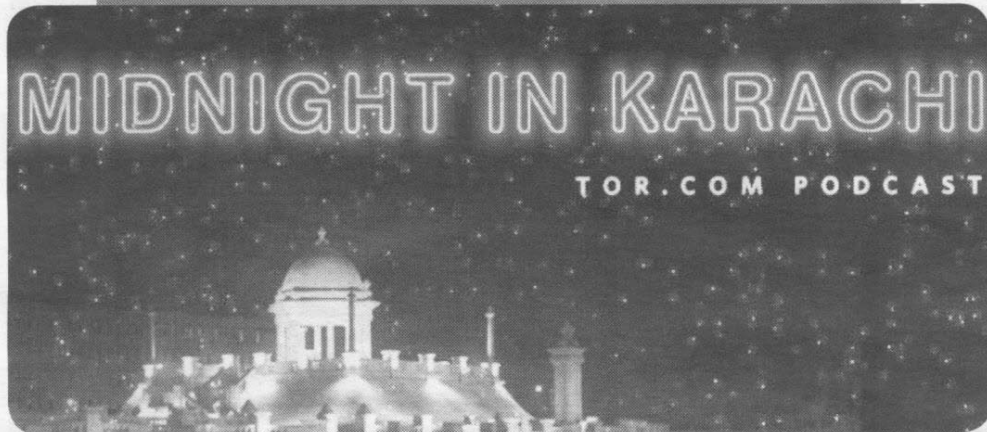
PHOTO BY: ELLIOT POND | RIP CRONK SPEAKS ABOUT HIS
PROCESS IN PAINTING THE MURAL.

 NETFLIX PICKS
**Netflix Series:****Gotham**

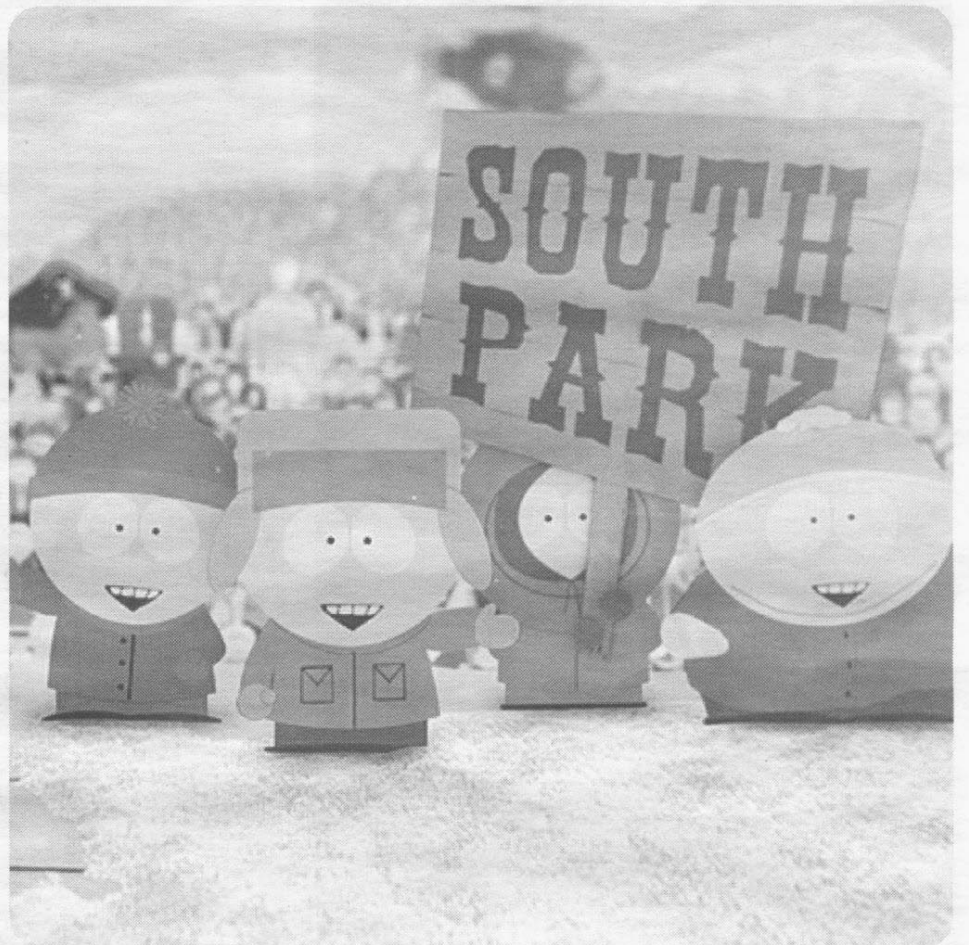
With season three currently airing on Fox you can indulge in the complete first two seasons of the madness. Follow young Bruce Wayne and Jim Gordon's mission to fix the corrupt city of Gotham.

**Netflix Movie:****Sweeney Todd**

Starring Johnny Depp and Helena Bonham Carter, Tim Burton's musical-thriller is a tale of love, loss, and cannibalism.

**Podcast Recommendation:****Midnight in Karachi**

Hosted by Mahvesh Murad, "Midnight in Karachi" is a weekly literary haven featuring writers, editors, authors, publishers, and illustrators.



REVIEW: SOUTHPARK SEASON 20

Almost twenty years have passed since "South Park" first began airing on Comedy Central. What began as a spin-off of Trey Parker and Matt Stone's cut-out animated short, "The Spirit of Christmas," has evolved into a long-running series that combines off-color humor with biting social commentary on current events and popular culture. Now, the series continues that tradition with its milestone twentieth season, which began airing this past September.

Much like the previous season, while there may be fewer episodes planned, the ones that do air have stronger continuity as part of a longer story arc. This time, the people of South Park are the subject of mockery by an internet troll amid this year's upcoming presidential election.

The early episodes have already proven to be a goldmine of satirical comedy. The season opening episode "Member Berries" addresses controversies such as the backlash to the female-led reboot of "Ghostbusters," as well as the current climate for franchise reboots in general. The episode also tackles the protest method of sitting out the national anthem, resulting in the U.S. government asking none other than director JJ Abrams to reboot it after the massive success of "Star Wars: Episode VII-The Force Awakens."

The newest episode as of this writing, "The Damned" features a savage mockery of the initial presidential debate between Hillary Clinton and Donald Trump (the latter represented by the character of Mr. Garrison). In the show's intentionally-crude animation style, everything from the candidates' inflections to Clinton's incredibly loud, red pantsuit are spot-on.

Yet even amidst all the vulgar parodies of our current political and cultural situations, the show still manages to be a surprisingly earnest look at life through the eyes of its citizens. A very sad scene in the second episode has the female students of South Park elementary break off their relationships with the male students in response to the cyber bullying they endured. The treatment of online bullying is played fairly realistically, from students shutting down their social media accounts to

the culprit being an individual not many would expect.

With the season's milestone firmly in place, it's clear that "South Park" has definitely left its mark on popular culture. One of the advertisements for the season depicts how the series has grown and changed to meet the needs of its audience. Even when very few things about many current events are funny, "South Park" has always found a way to make people laugh. It's bound to keep people coming back for years to come, no matter what happens.

Review Info:

Wednesdays at 10 p.m.

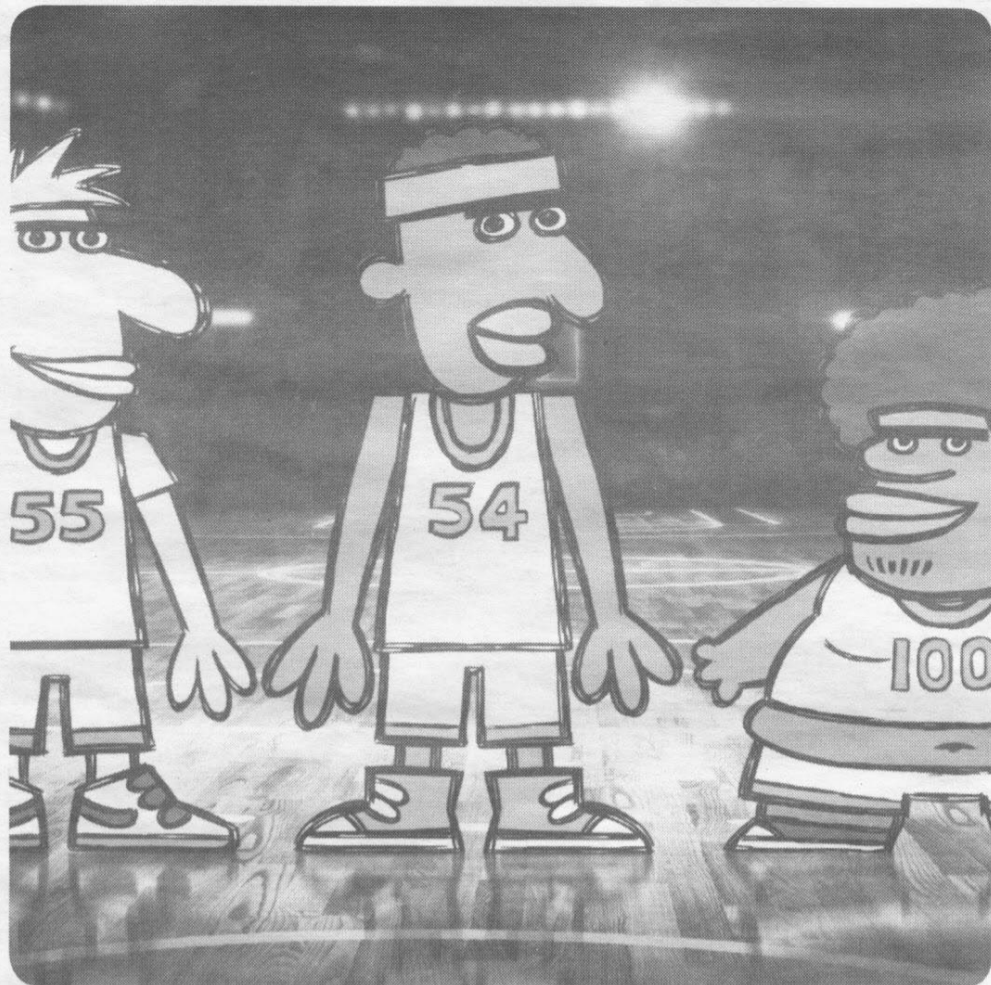
Rating: TV-MA

My Rating: ★★★★★

REVIEW BY
STEVEN PRYOR

"Even amidst all the vulgar parodies of our current political and cultural situations, the show still manages to be a surprisingly earnest look at life."





REVIEW: LEGENDS OF CHAMBERLAIN HEIGHTS

“Legends of Chamberlain Heights” is an attempt at another adult animated series from Comedy Central. The series chronicles the lives of three inner-city high school students trying to make it big enough to one day play professional basketball. Their names are Jamal (Quinn Hawking), Grover and Milk (Josiah Johnson). While not a bad idea on paper, the series is rife with the clichés of other shows of its type and lacks the wit that makes “South Park” so entertaining.

The show attempts to address issues that many students face every day, but the execution is woefully inept and thoroughly trivializes its subject matter. On top of that, virtually every aspect of the series is abysmal.

The animation style resembles a series of notebook drawings made by a middle-schooler on downtime, and the plotlines of the initial three episodes have been done far better by other cartoons of its kind. Virtually every character portrayed onscreen are unsympathetic and unlikable imbeciles. The sole exception seems to be a duo of campus police officers, who are portrayed as competent at their jobs, instead of many cartoon cops being similar to Chief Wiggum from “The Simpsons.”

Throughout the course of the first three crudely-drawn episodes, “Legends of Chamberlain Heights” tries to address topics such as designer drugs, child care and status symbols like overpriced basketball shoes. Unfortunately, the creators have openly admitted to not caring about what others think about their material. As a result, the potential for the series to be a truly funny and insightful series is wasted on an endless barrage of bad writing, cut-rate animation, and voice acting that’s some of the most grating ever committed to late-night TV.

While some viewers have compared the series to early seasons of “South Park,” that series can still be enjoyed on its own merit for the often surreal and bizarre nature of the earlier episodes. However, with “South Park” now having grown into an allegory for current events, “Legends of Chamberlain Heights” comes off as too one-note in its approach to be entertaining or insightful.

In obvious fact, “Legends of Chamberlain Heights” is an even worse attempt at adult animation for Comedy

Central than last year’s failed “Moonbeam City.” Even though the network has already greenlit a second season before the first even started airing, the initial three episodes have pulled ratings that are barely a fraction of what a typical episode of “South Park” can. As social commentary on high school life, it doesn’t do anything better than other shows of its type. As a sitcom, it’s lowbrow at best. As a potential new series, it’s definitely not recommended. Unless the creators are actually willing to put effort into their product, “Legends of Chamberlain Heights” is guaranteed to be a footnote in Comedy Central’s history.

Review Info:

Starring the voices of: Quinn Hawking, Josiah Johnson, and Michael Starrbury

Created by: Brad Ableson, Michael Clements, Quinn Hawking, Josiah Johnson and Michael Starrbury

Wednesdays at 10:30 p.m.

Rated TV-MA

My Rating: ★★★★★

REVIEW BY
STEVEN PRYOR



WEEKLY RECOMMENDATIONS

MOVIE REVIEW: BLAIR WITCH



Have you ever seen 1999’s *The Blair Witch Project*? Congratulations. You’ve already saved yourself ten dollars and ninety minutes. Adam Wingard’s *Blair Witch* is essentially the same film rehashed and resprayed with modern technology, while managing to lack the originality and suspense that made the original so popular.

The film follows James (James Allen McCune), the now-adult brother of the main character from the original *Blair Witch Project*, along with documentarian Lisa and friends Peter and Ashley, as they embark on a journey to find James’ missing sister, believing her to still be alive after finding an online video supposedly found on a tape in the woods where she went missing. After teaming up with the locals who uploaded the video, Lane and Talia, they hike into the woods and set up camp. And then it starts gets weird.

They hear random noises in the woods. They find odd stick figures around the camp. People start going missing one by one. They can’t find their way out of the woods. They start being chased by an unseen force that leads them to an abandoned house. Sound familiar? Sound like an exact scene-by-scene retelling of the original film? That’s exactly the problem. Even people slightly familiar with *Blair Witch Project* will recognize the obvious cut-and-pasted scenes.

To be fair, the new film lacks the iconic “tearful apology” scene, and we actually get to see the witch, if only briefly, but while the ending showed some promise in being different, it ended being the exact same because of one character’s stupid and obvious actions. If you’re looking for some good found footage this Halloween, do yourself a favor and watch the original *Blair Witch Project*. It’s essentially the same as its contemporary counterpart, except more authentic and more effective.



REVIEW BY
TRUMAN TEMPLETON

COACH HARTMAN ON THE 2016-17 BASKETBALL TEAM



Men's B-ball prepares for the upcoming season

"Nowhere to go but up," said Everett Hartman, Linn-Benton Community College's Interim Men's basketball coach.

LBCC Men's basketball team finished their 2015-16 regular season 9-18 overall, and under the new interim head coach are expecting to improve on their record from last season. Hartman has coached two different schools for nine years as a high school freshman coach, and two different schools for eight years as a junior varsity coach. He spent four years as West Albany's varsity coach (1999-2003) and lead assistant at LBCC from 2003 to 2005, where he helped lead the team to the Northwest Athletic Conference (NWAC) tournament for the first time in school history.

This year's team starts with four returning players: Brodie Marchant, Kendrick Abraham, Kai Bansen, and Trevor Herrold.

"We're really expecting a lot out of Brodie Marchant. He's done some really good things for us," said Hartman.

The staff also recruited 10 new players: Trent Pihás, JJ Stewart, Tanner Autencio, Trey Ecker, Isaac Garber, Jessie Marchant, Kyle Meyers, Cooper Getsfrid, Brady Ford, and Carter Flora.

One of the aspects that Hartman was most happy with was that eight out of the 14 players are from high schools in either Linn or Benton county.

"My belief is that if we could get the absolute best players from all the high schools in Linn and Benton county we could really be a great team," Hartman stated.

The team's first game is a home game against Tacoma Community College on Friday, Nov. 18.

"Tacoma Community College is a very strong program, they're traditionally in

"Our first thing was to get them acclimated on campus, get their schedule set for them, show them where the learning center and library are."

the top four of the entire NWAC. It's a chance for us to host a really quality team and program at home and see where we're at," said Hartman.

Overall, Coach Hartman always wants his players to prioritize being a student first.

"Our first thing was to get them acclimated on campus, get their schedule set for them, show them where the learning center and library are," said Hartman.

He also takes pride in helping his players grow up.

"We want to hold them accountable, make them become more mature. I think 18 and 19 years of age is really a time of growing up."

STORY AND PHOTO BY
NICHOLAS FIELDS

CORVALLIS-OSU SYMPHONY ORCHESTRA

Marlan Carlson, Music Director

FROM STAGE & SCREEN

SUNDAY, OCTOBER 16, 3:00 PM

Rossini: William Tell Overture

Lively Vocal Music from Stage and Screen

Bella Voce Women's Chorus

OSU Meistersingers Men's Chorus

Katie Smith, vocalist

Rob Birdwell, guest conductor

Tchaikovsky: Romeo and Juliet Overture

For accommodations for disabilities, please call 541.286.5580, preferably one week in advance.

Reserved Seats: \$22, \$27, \$32
www.cosusymphony.org
CAFA and student discounts apply

General Admission: \$20
Grass Roots Books & Music
Gracewinds Music

COSUsymphony.org
541.286.5580



DID YOU KNOW?

If one night in the bag is good, then two nights in the bag is better.

SEEKING MOTIVATED STUDENTS LOOKING FOR PAID WORK EXPERIENCE

There are **MULTIPLE OPENINGS** that need to be filled **ASAP**.

Are you majoring in any of the following areas?

Business/Office	Computer Science	CTE Programs
Biology	Chemistry	Engineering
Management	Other majors considered	

Minimum qualifications:

- Two terms of college courses or comparable work history
- Min. 2.0 GPA; Must be pursuing a degree or certificate
- Registration in the CWE program at LBCC
- Prefer a min. one-year or longer commitment to employment

How to APPLY???

Contact: Lena Carr or David Bird
cwe@linnbenton.edu - 541.917.4787
McKenzie Hall - MKH 210

