

COMMUNITER

VOL. 48 EDITION 24  APRIL 12, 2017

GIVING BLOOD

LB community rallies for blood drive



PHOTOS: ANGELA SCOTT

Jill Smith, phlebotomist for American Red Cross, laughs with blood donor Sandy Corliss.



At left Raven Najar, phlebotomist for The American Red Cross, examines the blood vessels in Makenna Crofcheck's arm, prior to Makenna's donation. The American Red Cross held a blood drive at Linn-Benton Community College in Albany on April 6.

LBCC community remembers student veteran Tom Tyger. Story on page 8

THE LINN-BENTON
COMMUNITY COLLEGE

COMMUTER

The Commuter is the weekly student-run newspaper for LBCC, financed by student fees and advertising. Opinions expressed in The Commuter do not necessarily reflect those of the LBCC administration, faculty and students of LBCC. Editorials, columns, letters, and cartoons reflect the opinions of the authors.

Letters Welcome

The Commuter encourages readers to use its "Opinion" pages to express their views on campus, community, regional and national issues. The Commuter attempts to print all submissions received, but reserves the right to edit for grammar, length, libel, privacy concerns and taste. Opinions expressed by letter submitters do not represent the views of the Commuter staff or the College. Deliver letters to:

Address:

The Commuter Office
Forum 222
6500 SW Pacific Blvd.
Albany, Oregon 97321

Web Address:

commuter.linnbenton.edu

Phone:

541-917-4451, 4452 or 4449

Email:

commuter@linnbenton.edu

 **Twitter**
@LBCommuter

 **Facebook**
The Commuter

 **Instagram**
LBCC Commuter

Our Staff

Adviser

Rob Prieue

Editor-in-Chief

Emily Goodykoontz

Digital Managing Editor

Alyssa Campbell

Newsroom Manager

Hannah Buffington

Social Media Editor

K. Rambo

A&E

Samantha Guy - **Editor**
Steven Pryor

Editorial Assistant

Saul Barajas
Samantha Guy

Layout Designer

Scarlett Herren

News

Katelyn Boring - **Editor**
Josh Stickrod

Photography

Elliot Pond - **Editor**
Angela Scott
Wesley Rankin

Sports

Nick Fields - **Editor**
Joshua Knight

Web Master

Marci Sischo

Advertising

Austin Mourton

Contributors

Constance Jones

TRUMP PROPOSES EPA CUTS

Executive order eliminates environmental protections in the name of industry

The wood-paneled Map Room at the EPA office was packed with media and government officials on Tuesday, March 28.

Secretary of Energy Rick Perry was present, who received over \$1.6 million from the gas and oil industry during the 2016 campaign. Also present was the Trump-appointed EPA head, Scott Pruitt, who has received over \$300,000 from the gas and oil industry in the last 15 years and had sued the EPA over 12 times as an Attorney General. Trump received over \$1 million from oil and gas, including \$500,000 from Exxon Mobile, after Trump announced CEO Rex Tillerson was his nominee for Secretary of State.

President Trump signed an executive order in the EPA office, shortly after proposing to cut their budget by almost one-third.

The executive order was written directly to eliminate efforts by the Obama administration to slow climate change and invest in renewable energy sources, rescinding one executive order and three presidential memorandum. The executive order also lifted a moratorium on federal coal leases intending to create more jobs

in a dying coal industry.

Investment and energy insiders are skeptical of the effect the order will have on jobs.

"Even by doing this you are not going to be bringing mining jobs back," said Sheldon Stone, a partner at Amherst Partners, LLC, an investment banking firm.

Experts say power plants moving towards natural gas and other forms of energy are causing the loss of coal jobs, rather than regulations. Six plants have either closed or announced their closure since Trump was elected, with another 40 expected to close in the next 4 years.

According to the Department of Energy, use of coal in power production has decreased by 53 percent since 2003, while natural gas use has increased by 22 percent.

Trump also rescinded two environmental reports of the Obama era that included peer-reviewed science and plans relating to ecological crises titled "The President's Climate Action Plan," and "Climate Action Plan Strategy to Reduce Methane Emissions."

"Today, we're taking a great step in breaking the restraints that have become

burdens," said Perry, who partially owns several energy companies.

The notion that environmental regulation is bad for business is a common one, but the new administration is taking a clear stance that places business above environment.

"We're not going to allow regulations here at the EPA to pick winners and losers," said Pruitt.

The move comes from an administration full of purported climate change skeptics including Trump, Pruitt, Perry, and Secretary of the Interior Ryan Zinke, who was on-hand for the signing.

Trump also invited coal miners to be present for the signing of the order, heaping praise on them and the coal industry during his speech.

"You know what this is, right? You're going back to work," Trump told a coal worker just before signing the order.



STORY BY
K. RAMBO
@K_RAMBO_

CAMPUS VOICE

If you could choose your name, what would your name be, and why?



CHEYENNE GIBSON ARTS

"I'M KIND OF OBSESSED WITH THE NAME LEX BECAUSE MY FAVORITE CHARACTER ON SMALLVILLE IS NAMED LEX, SO I WOULD CHOSE THAT ONE."



CHAPMAN KUYKENDALL BIOLOGY

"I WOULD CHOOSE A NORMAL NAME, MAYBE SOMETHING LIKE ALEX OR JOHN, OR SOMETHING LIKE THAT."

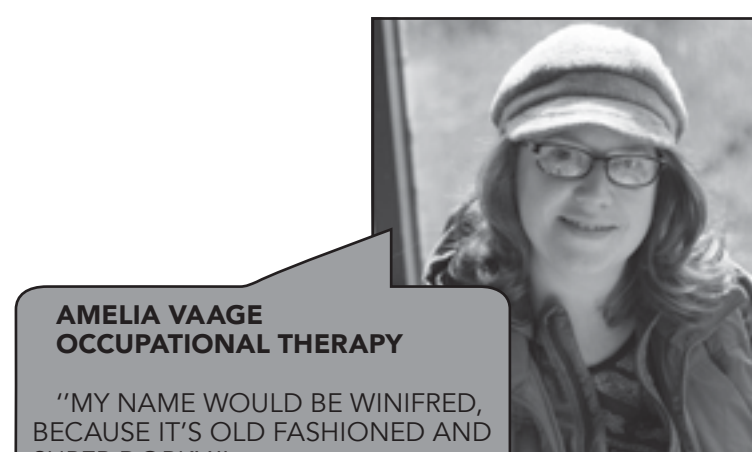
UTA BRIGGS FISHERIES AND WILDLIFE

"I REALLY LIKE CLAIRE, BECAUSE IT'S BEAUTIFUL AND FEMININE, AND I THINK IT'S FRENCH."



SERGIO ESCOBEDO BIOLOGY

"DEFINITELY DANIEL, BECAUSE IT'S A BILINGUAL NAME, AND IT WORKS ON ENGLISH AND SPANISH."



AMELIA VAAGE OCCUPATIONAL THERAPY

"MY NAME WOULD BE WINIFRED, BECAUSE IT'S OLD FASHIONED AND SUPER DORKY."

STORY BY
SAUL BARAJAS

PHOTOS BY
WESLEY R.



PHOTOS: LORI FLUGE-BRUNKER

Levi Willmeth holds the payload for the Eclipse Ballooning Project

ROCKET MAN

Space Club Project Manager Levi Willmeth discusses inspiration and upcoming NASA Internship

It was a clear Saturday morning and the Albany campus of LBCC was mostly silent aside from the few birds that chirped in the morning sun. The majority of the college's students were at home recovering from the busy school week while Levi Willmeth and the Space Exploration Club were hard at work on their latest endeavor.

Willmeth is a graduate of LBCC with an associate degree in computer sciences. He is the project manager of the Space Exploration Club and is starting an internship at NASA later this year in June. He is currently enrolled at OSU and is scheduled to graduate with a bachelor's degree in 2018.

Willmeth grew up in a small, unincorporated community in Southern Oregon called Williams. He cites his small-town upbringing as an inspiration for going into computer engineering.

"Growing up, I was always fascinated by electricity and electronics. Maybe it's because we lived very much off-the-grid, without amenities like electricity, or even a phone line, at home."

Willmeth was home schooled immediately after sixth

grade and felt like he was missing out on opportunities for pursuing a college education because of it. He was fed up with his situation and decided to take action by enrolling at LBCC.

"Four years ago, I realized it wasn't my circumstances holding me back: it was just me. One day I realized I had to get out of my own way, and three months later, I moved across the state and enrolled at LBCC."

In 2015, he applied for a workshop put on by the LBCC Space Exploration Club, where they designed a scientific payload to fly on board a NASA research rocket. He loved the experience and has been with the club on every project since. He is currently the manager of their upcoming project, where they look to launch a video payload on board a high altitude balloon to capture near-space footage of the solar eclipse scheduled to cross the continental United States later this year.

"He's a good leader, very good at nurturing creativity, and loves when people bring their ideas to the table," said Delphine LeBrun Colon, who has worked with Willmeth in the club since 2015. LeBrun Colon was the Space Exploration Club project manager last year, when the group built an ambitious rocket-borne payload that was designed to measure polarized energy from gamma rays in space.

"I couldn't have led the team without him last year," said LeBrun Colon, who praised Willmeth's contributions to the project last year.

Willmeth is committed to the club and is always looking for new ways to improve. Several members of the club admire his work ethic.

"I wish I had his blood pressure. He's so calm and collected, always on task and he's a great role model to other students," said Space Exploration Club adviser Parker Swanson.

"If I had to describe him in one word, it would be dedicated," said Space Exploration Club member Evan Schreiber.

"He's always the first one here and the last one to leave," added Seth Newman.

For his internship with NASA, Willmeth will be writing and testing embedded software for orientation control systems on projects like unmanned aircraft systems and satellites. He applied for the internship through NASA's One Stop Shopping Initiative (OSSI), a NASA-wide system that is used for the recruitment, application, selection and development of high school, undergraduate, and graduate students. They hope develop applicants in the various fields of science, technology, engineering and mathematics.

"I would definitely encourage more students interested in a career in aerospace to apply," said Willmeth "It was a little intimidating at first since I didn't come from a big school, but

options
Pregnancy Resource Centers

**Pregnant?
Take control.**

Scan to schedule a confidential appointment and take control of your unplanned pregnancy.

867 NW 23rd St, Corvallis 1800 16th Ave SE, Albany possiblypregnant.org
541.758.3662 541.924.0160

UPCOMING EVENTS

April 12
39th Annual Career Fair
• 10 a.m. to 2 p.m. in LBCC Activities Center Gym

April 16
Novak's Easter Brunch
• 9 a.m., SW 2nd Ave, Albany

April 19
President's Spring Forum
• LBCC Forum 104, 3 p.m. to 4:30 p.m.

April 20
Earth Day Fair
• Main campus courtyard. From 11 a.m. to 2 p.m.

Corvallis Repertory Singers and OSU Music concert
• Joint concert that is a West Coast Premiere and will be recorded for release by Marks Records of Clarence, NY. Tickets are \$18 to \$25, in the OSU LaSells Stewart Center's Austin Auditorium.

April 21
Inservice
College closed to public
Home Baseball game
• Home vs. Lane CC Double Header 1 p.m. to 5 p.m.

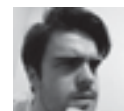
NASA is ultimately looking for people with experience more than anything. These types of opportunities with the club are more valuable to them than any big school background you might have."

Willmeth credits the Space Exploration Club as an integral part for obtaining his internship opportunity.

"My experience with the LBCC Space Club was critical to getting this internship, because I had plenty of real world experience to talk about on my application and during my interviews," said Willmeth. "I feel like a small-town car mechanic who got invited to work on an F1 car."

While Willmeth is excited to get started at his internship, he reflected on his time at LBCC and with the Space Exploration Club.

"I guess I just want to let students know how many opportunities at LBCC there really are and encourage them to take a look at the types of programs that are available."



STORY BY
JOSHUA STICKROD
@STICKRODJOSH

Play Day

LB Athletics Department hosts third annual children's event

The baseball made contact with Gabriel Guzman's bat. He ran to first, second, then third base, but would he make home? The ball sped towards Gabriel, but he slid across the LBCC gym floor into home. A home run!

Gabriel, the ash blonde 3 foot wonder, was one of many children attending the LB Play Day this past Saturday.

Linn-Benton's Athletics Department hosted their third annual LB Play Day on April 8, from 11 a.m. to 2 p.m. at the Albany campus, in the LB Athletics Building.

The event was well attended with a circus of children and volunteers running around.

Michael Winder coordinator of the event, said the point of this event was to "Be active, be healthy, and beyond being healthy, just having fun."

Winder's desire for the Play Day was working, with a variety of kids from different age groups playing baseball, basketball, bike racing, mini golf, soccer, volleyball, pound rockout, a combination of drumming and exercise, and even quidditch.

According to door greeter Randy Scout, this year was different, as he said "We usually do [the Play Day] on Friday, when public schools have in-service."

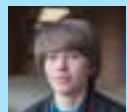
Players representing all LB sports teams were also there helping out with the event.

"I see athletes as positive role models," said Heidi Officer, a friend of the Guzman family and LB student. "Gab[ri]el seems to be having a really fun time."

As it was rainy throughout the day, the activities were held inside.

"This is so nice of them to do; my grandson's [in the gym], and having a great time," said Karen Cardosa, a grandparent who brought her grandchildren to the event.

The LB Athletic Department aimed to encourage kids in doing healthy activities that are also a whole lot of fun.



STORY BY
CONSTANCE JONES
@CONSYMJONES



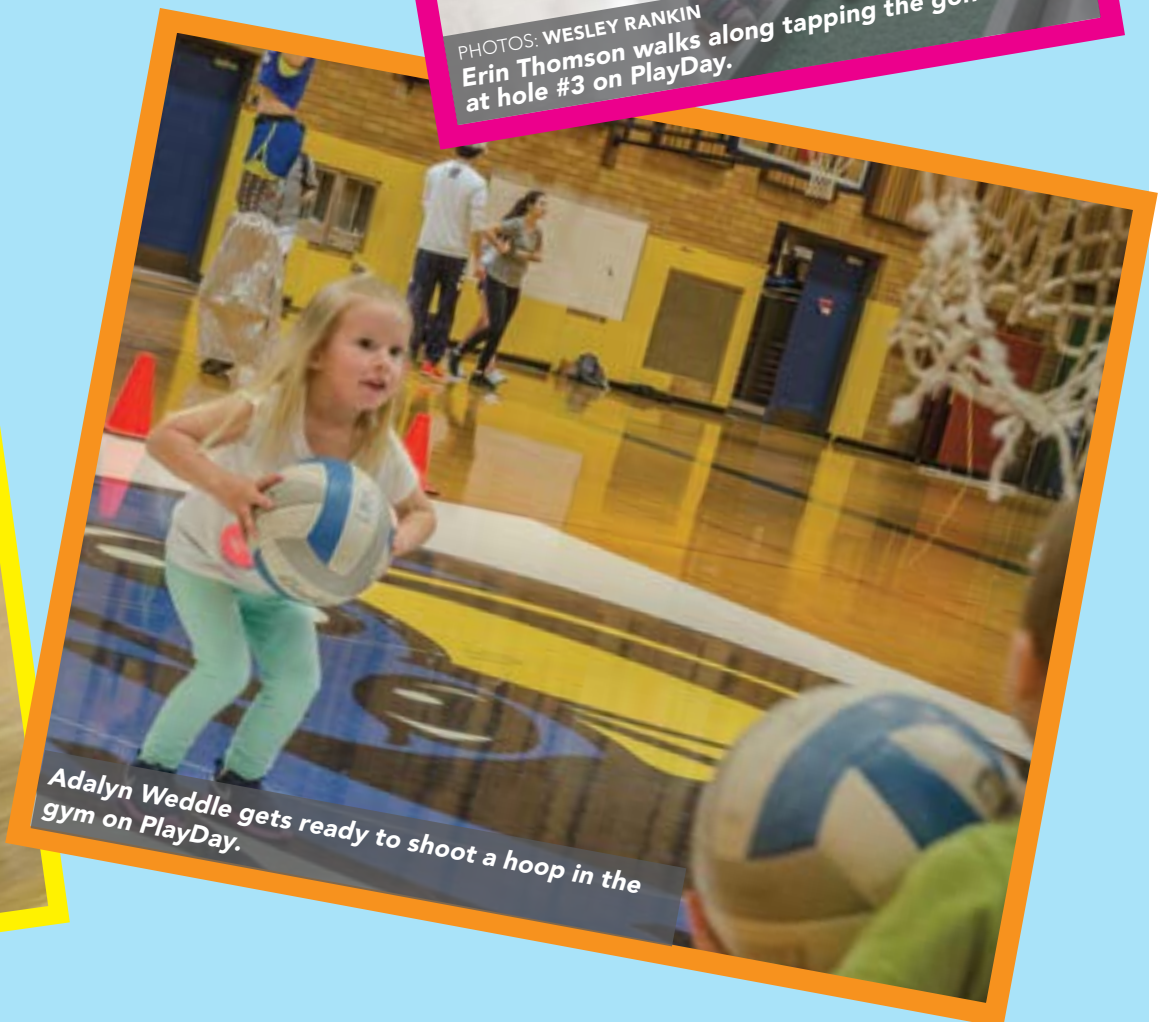
Erin Thomson gets ready to shoot a hoop in the gym on PlayDay.



PHOTOS: WESLEY RANKIN
Erin Thomson walks along tapping the golf ball at hole #3 on PlayDay.



Shayden Woolridge prepares to throw a volleyball over the net to Alyvia Sams (not shown).



Adalyn Weddle gets ready to shoot a hoop in the gym on PlayDay.



PHOTOS: Wesley Rankin
Colton Cosner at bat while Josh Congdon practices his swing during the game against SWOCC on April 8.

RUNNING WILD

LB baseball tied for first in region

LBCC's baseball team is currently dominating their season so far, with a record of 16-6 overall (6-2 in league) and tied for first in the Southern region of the Northwest Athletic Conference (NWAC).

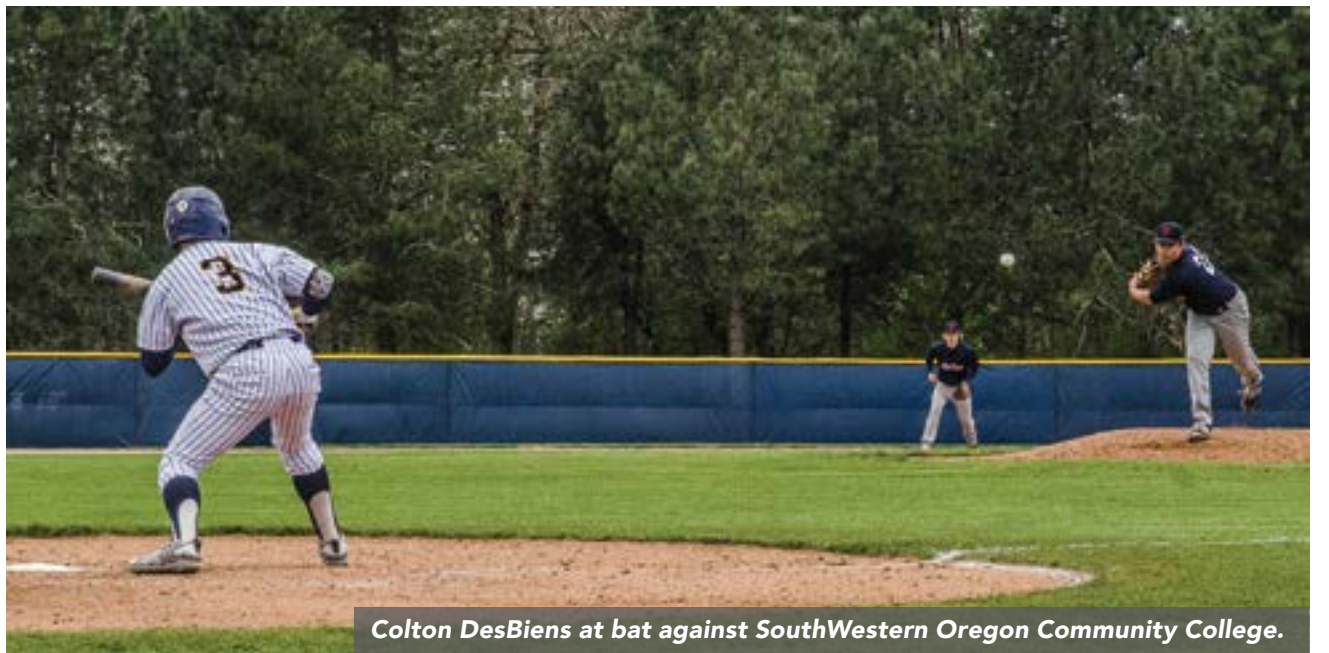
After picking up a non-league win against Linfield JV, the team traveled to Coos Bay for two doubleheaders against Southwestern Oregon Community College (SWOCC). The Roadrunner split the first doubleheader against SWOCC on Saturday, April 8, winning the first game 3-0 and then falling 0-3 in the second game. The teams ran it back on April 9, with LB taking both games 5-2.

Shortstop Josh Congdon has been one of the team's best hitters so far. Congdon's batting average so far is .338, with 14 runs and seven RBIs (runs batted in) on the season. Congdon had four runs over the weekend with 12 at bats, and also contributed four hits.

Colton Cosner also has had a productive batting season so far. His average sits at .337 with 18 runs and six RBIs this season. Against SWOCC, he had four runs and seven hits.

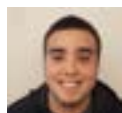
The Roadrunners will host the first doubleheader against Clark on Friday, April 14 with the games scheduled at 1 and 4 p.m. The team will then travel to Clark on Saturday, April 15 and play a doubleheader with games at 1 and 4 p.m as well.

Clark has currently played six less games than LB, but



Colton DesBiens at bat against SouthWestern Oregon Community College.

have been formidable so far, with an overall record of 12-4 and 3-1 in league play. The games should be a great test between the teams to see who will pull ahead as a real contender in the Southern region of the NWAC. Right now it looks to be a three-team race between the Roadrunners, Lane, and Clark.



STORY BY
NICK FIELDS
@NICKYY_ROZAYY



Donte Glover makes a pitch to SouthWestern Oregon Community College player.

LBCC

EARTH DAY

Science Matters

Thursday
April 20

11 a.m. – 2 p.m.
Courtyard
Albany campus

Activities & Educational Tables!

- Earth Day Eco-activities
- Free Seed & Plant Starts
- Lunch at the "Earth Day Caffe"
 - Recycle your shoes
 - Clothing & Book Swap
 - And so much more!

UPCYCLE Contest

Show your project - win PRIZES!

"Bust-a-Myth"

LB Scientist's take the Earth Day stage!
Noon-1 p.m.

LBCC is an equal opportunity educator and employer. Persons having questions about or requests for special needs and accommodations should contact the Disability Coordinator at Linn-Benton Community College, RGH-105, 6500 Pacific Blvd. SW, Albany, Oregon 97321, Phone 541-917-4690 or via Oregon Telecommunications Relay TTD at 1-800-735-2900 or 1-800-735-1232. Contact should be made 72 hours or more in advance of the event.

25% Off

any Tanning Package

Present current LBCC student or faculty I.D. card.
535 S. Main Street Lebanon, OR 97355
Phone: (541) 405-3952
www.facebook.com/oregonsuntubs/
Offer expires May 31.



COURTESY: CARTOON NETWORK STUDIOS

TV SERIES REVIEW:

Samurai Jack Season 5

NETWORK: Adult Swim

STARRING: Phil Lamarr, Greg Baldwin, Tom Kenny, Kari Wahlgren, and Tara Strong

CREATED BY: Genndy Tartakovsky

PRODUCTION: Fox 21 Television Studios

GENRE: Biography, Drama

RATED: TV-14-V

OVERALL RATING: ★★★★★

REVIEW BY **STEVEN PRYOR**

After many years in the making, the fifth and final season of “Samurai Jack” has arrived. Genndy Tartakovsky has revived the acclaimed Cartoon Network TV series to conclude its storyline on Adult Swim, and has done so in a spectacular fashion.

The series picks up where the original series left off in its original run from 2001 to 2004. Fifty years have passed since Jack (Phil Lamarr) was flung into the distant future. In his battle against the evil being Aku (Greg Baldwin, replacing the late Mako Iwamatsu), Jack is pursued by an onslaught of enemies ranging from the robotic hitman Scaramouche (Tom Kenny) to a group of female assassins known as the “Daughters of Aku,” bred and trained for the sole purpose of killing Jack. Still, his goal remains the same: to return to the past and defeat Aku once and for all.

As a season many people have been waiting years to see, Tartakovsky has made sure to deliver a conclusion he would want to experience as much as the fans would.

The season initially began life as a proposed film adaptation. As a result, the series has taken an already stellar TV show and infused it with a cinematic look and feel that is worthy of its namesake. The animation, writing and voice acting are on par with many theatrical animated films.

The show also takes advantage of its airing on Adult Swim to show material that was only hinted at in the original Cartoon Network run of the series. The opening scene of the new series has Jack dispatch a group of robotic beetles in a far more brutal fashion than in the earlier seasons, and the lines Jack has to cross in order to get back to his own time have considerably more shades of gray than in the original run. Without spoiling anything, Jack primarily having fought against machines is a major plot point when he engages the Daughters of Aku.

The only notable flaw is that the season is primarily made for fans of the original series. While it is possible

to follow the revival coming in cold, it is recommended that those who haven’t seen the original run watch that first. Even so, as a revival of one of Cartoon Network’s most memorable series, it manages to deliver everything fans were waiting for.

The fifth and final season of “Samurai Jack” is easily one of the best TV series that Adult Swim has had a hand in making. Much like its namesake, it is a welcome fit for the revived Toonami with its similarities to the artistic and storytelling capabilities of anime. It is one of the rare animation revivals that can stand at peer with its predecessor as well as be a great series on its own. There has never been a better time to get back to the past with “Samurai Jack.”



COURTESY: FOX 21 TELEVISION STUDIOS

TV SERIES REVIEW:

Feud: Bette and Joan

NETWORK: FX

STARRING: Jessica Lange, Susan Sarandon, Judy Davis, Jackie Hoffman, Alfred Molina, Stanley Tucci and Alison Wright

CREATED BY: Ryan Murphy, Jaffe Cohen, Michael Zam

PRODUCTION: Fox 21 Television Studios

GENRE: Biography, Drama

RATED: TV-MA

OVERALL RATING: ★★★★★

REVIEW BY **STEVEN PRYOR**

In recent years, there has been a large amount of TV series that have rivaled theatrical films in terms of writing, acting, and production value. Joining this list is the FX drama “Feud: Bette and Joan.”

The series, which details the real-life feud between actresses Bette Davis and Joan Crawford during the filming of “Whatever Happened to Baby Jane,” manages to tell a great story on its own as well as recount a fascinating piece of film history.

The year is 1961. Joan Crawford (Jessica Lange) and Bette Davis (Susan Sarandon) are in their twilight years as the film industry is at a turning point. Defying conventions at the time, the two are cast in the film adaptation of “Whatever Happened to Baby Jane.” With the combination of their raging egos, pressure

from overworked director Robert Aldrich (Alfred Molina) and producer Jack Warner (Stanley Tucci), all does not go smoothly.

As the first of several planned series bearing the “Feud” name (a second incarnation centered around Prince Charles and the late Princess Diana will air in 2018), the series is a great look at a key conflict in film history. The period details of early-1960s Los Angeles are meticulous in detail in everything to the sets, costume and hairstyles as well as the frank depiction of how people behaved during that time frame. The cast also puts on performances that are worthy of their roles. In addition to the main cast, Catherine Zeta-Jones brings a great layer to the story as Olivia de Havilland, recalling the “feud of biblical proportions” between Bette and Joan in 1978.

While the series does occasionally wander into the territory of a campy exploitation film from the 1960s, “Feud: Bette and Joan” is still a delightful look at one of the most intriguing conflicts in the history of film and is highly recommended.



DID YOU KNOW?

Did you know that the largest emerald is the size of a watermelon?



222 1st Ave W. • 541-220-4740 • CjLingerie@gmail.com • Bras up to 44G and Lingerie up to 2x/4x

LBCC Chess Club

Gathers weekly in the Commons Cafeteria

Mondays: Noon - 3 p.m.

Tuesdays: 10 a.m. - 1 p.m.



Beginners Welcome!



The Futility of Hope

By J.H. Boldcrow

Shimmering dots of frozen dew masquerade as glass along the rusted fence.
Smoke and steam emanate from the birthplace of my words.
The words seem so significant,
as representations of the life I've lead;
The life I want to lead.

My feet beneath me press into the sodden soil.
I am here now. I am here, now.
It's as though what I say is a farce,
That I want to be alone,
That I don't like anyone,
But truly I am scared.
It seems my words are a shield against reality,
Concoctions of convenient constitution,
As if I can preemptively protect with decisive desolation.

The futility of hope seems as real to me as the mist that coats my shivering body.
I am alone, but the lie I love is that I wish to be.
My attempts of adequacy have been stifled by those I seek acceptance from,
I feel weak and dependent,
I feel human.

I wish to be much like the machines I lament:
Dispassionate, uninvolved, unconcerned-
Not seeking approval or companionship-
Not seeking Meaning.
But I long to be loved,
I long to be held,
I long to be human.

The futility of hope is as ever present as the pressure in my chest:
Fear that my words came as too many;
Or too few.
Knowing all along that love is for fools and hatred is for the bored.
Sadness; sadness is of the greatest authenticity,
Loneliness cuts to the instinctive core of my social primate existence,
Hope is but an idea,
Despair; despair is a tangible reality.

The futility of hope is little more than the first stage of disappointment.
Wheels cutting paths in the wind of my mind,
The paths always end in the same place:
An empty valley scorched in an inferno of civilization past,
Walking on smoldering coals, I begin again on the circular path.
I feel so hopeful.

I feel so human...

Call the Captain

By Christopher Mikkelson

That which I will, I do not.
That which I will not, I do.

In conclusion,
I must be a stowaway,
and the captain remains below deck.
I feel I should tell him
he's missing a spectacular shipwreck,
but I doubt he'd care for the aesthetic.

Dare I take the helm?

No, does not
the officer's hat come with it,
and grim lionesque jaw?
I prefer the din of anarchy
than to hear my voice speak law.

If a signal flies
that I could be more,
I'll scratch my head, and pretend
I never learned semaphore.

I will go down with this ship,
claiming a lack
of title and deed,
therefore lacking need
to avert my submersion
At the risk
of my conversion.

Progress

By J.H. Boldcrow

Trees crumble spilling a sick ashen suit,
Infectious toxicity, the hallmark of a society,
The waste we lay to nature, we lay to ourselves,
Conditioned-to-self-infliction perpetuates pre-fabricated hell.

Nature: just a resource,
Just another to be bought and sold,
An object amongst objects,
The future has been stolen and told,

And when we think of animals exploited for profit,
Why do we then not think of ourselves as well?
Objectified within the system-conditioned elements objectify others,

And Do the oppressors need to strive to oppress when we so quickly oppress one another?



REMEMBERING TOM TYGER

LBCC mourns loss of student veteran Tom Tyger



PHOTO: COURTESY OF LBCC VETERANS CLUB

Last week LBCC and the Willamette Valley lost a beloved member of the community.

“Our community is suffering: he was an amazing member of the community, and he inspired everyone his life touched,” said John Maine, member of the LBCC Veterans Club.

On April 4, Tom Dakota Tyger was found in his home after taking his own life.

Tyger, 21, served his country with pride, and according to his family and friends, made everyone he was close to proud of him. Upon leaving the military, Tyger continued striving to make a difference in his community; this time at the community college.

Tyger was an active student in the LBCC community and was known to enjoy school. He was well-known and respected by his teachers, and had an interest in political sciences, as well as the liberal arts. During his time at LBCC, Tyger was a member of the Veterans Club, the LBCC Active Minds club, and Student Life and Leadership. He also enjoyed physical activity, especially lifting weights, and the gym became his sanctuary.

These three groups have come together with others who knew Tyger to plan a memorial and remembrance service, which will be held at LBCC on Thursday, April 13. The service will be held at 4:30 p.m., and more information will be released as soon as final arrangements are made.

A memorial site has been set up on the east side of the Forum building, where students, staff and faculty can leave notes, flowers, pictures and other remembrance items for the family.

Tyger’s parents would like to thank the LBCC and Albany communities for loving him and showing him so much support.

To help students, staff, and faculty through this loss, counseling is available Monday through Friday from 9 a.m. to 4:30 p.m. in the Advising Center in Takena Hall, and additional counseling is available in the Veterans Center, with more information coming later as they work out an exact schedule. Additional counseling and grief support will be provided at the end of the memorial.

LBCC’s Advising Center offers short-term counseling, but does not provide long-term therapy.

“We are not set up to do long-term therapy, so we refer and work with our community providers,” said Lisa Hoogesteger, a well-being counselor at LBCC.

While booking an appointment in the advising center is generally preferred, the counselors are aware that sometimes, especially, with situations such as this, people need to come in right away to talk. This is, according to Hoogesteger, perfectly acceptable, and the counselors will do their best to meet with people on the fly.

Free coffee will be available in the Hot Shot Cafe for those who want to sit down and talk about Tyger.

A day of weightlifting in honor of Tyger is also in the works, with more details to follow.

Members of the LBCC Active Minds club will also be passing out pamphlets and brochures with contact information for crisis hotlines. The Active Minds club is a nonprofit organization that encourages students to speak about mental health, both to help educate the community and to encourage

ADDITIONAL INFORMATION

National Suicide Prevention Hotline: 1-800-273-8255

Linn County Mental Health: 1-800-560-5535

Benton County Mental Health: 1-888-232-7192

Community Outreach Crisis Intervention: 541-758-3000

Native Youth Crisis Hotline: 1-877-209-1266

National Crisis Textline: Text Connect to 741741

Support After Suicide: 541-905-9787

- www.mayoclinic.org/diseases-conditions/suicide/in-depth/suicide/ART-20044707
- www.suicidology.org
- www.survivorsofsuicide.com
- www.afsp.org
- www.suicidepreventionlifeline.org

people to seek help.

“We were lucky to have the time we had with him, but I wish we had more,” said Maine. “I challenge everyone to show compassion towards those around them and be an ear for people.”

Maine was not the only one to share this sentiment.

“Try to not only be sympathetic of situations, but empathetic as well. Being able to relate to people is a lot more powerful,” said Justen Noll, leader of the LBCC Active Minds club. “Be mindful of your fellow classmates; I think mindfulness is very important to practice. Be aware of what you say and listen to others, if they need to talk, lend yourself as an open ear.”

Tyger is survived by parents Tim, Terra, and Wendy Tyger; sisters Sadie Campbell, Cierra Tyger, and Nevaeh Tyger; and brother Levi Gutierrez, as well as Levi’s wife, Autumn Rollin, and their two children, Levi Jr. and Kayden Gutierrez.



PHOTOS: ELLIOT POND



STORY BY
KATELYN BORING
@K8DOESTHINGS